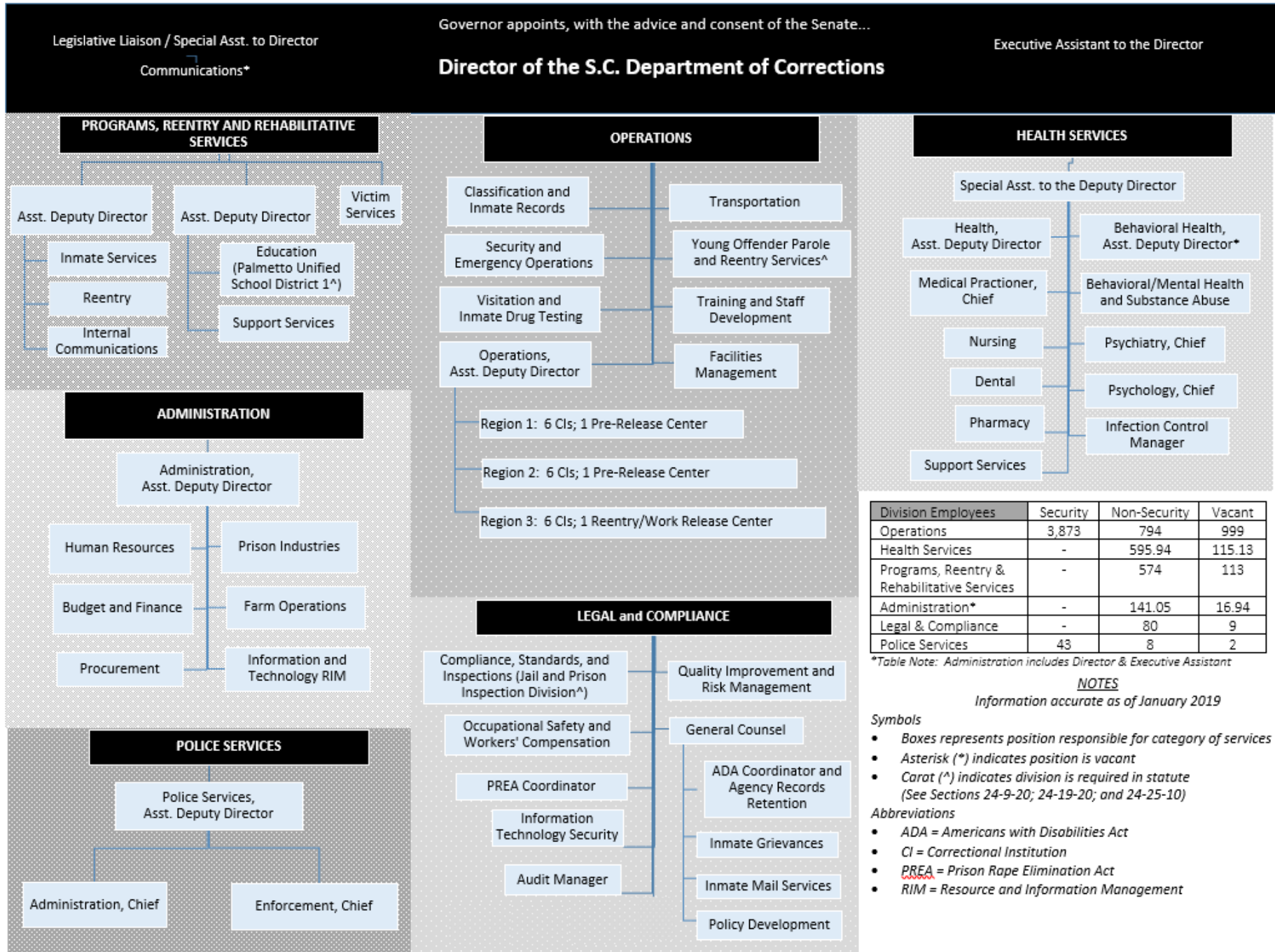


# ORGANIZATIONAL CHART AND STAFFING



# Programs, Reentry, and Rehabilitative Services

The mission of the Division of Programs, Reentry and Rehabilitative Services is to maintain and manage Agency resources while providing quality programs and services in a safe, responsive, effective and courteous manner.

The following are under this division:

- Education (Palmetto Unified School District 1)
- Inmate Services
- Internal Communications
- Reentry
- Support services
- Victim Services



# Operations

Oversees daily operations of the SCDC's 21 correctional institutions as well as the following:

- Division of Classification and Inmate Records,
- Training and Staff Development,
- Facilities Management,
- Inmate Visitation and Drug Testing, and
- Young Offender Parole and Reentry Services.



# Health Services

Includes the following to provide a comprehensive continuum of healthcare:

- Medical Practitioner
- Behavioral/Mental Health and Substance Abuse
- Nursing
- Psychiatry
- Pharmacy
- Psychology
- Dental
- Infection Control



# Administration

The Division of Administration is responsible for the following:

- All agency
  - Human Resources
  - Finance
  - Information Technology
  - Procurement
- Farm operations
- Prison industry operations



# Police Services

Assigns agents needed to investigate criminal acts which are believed to have been committed by SCDC inmates, employees, or others when the crime relates to the agency.

**NOTE:** This is different than security within the prisons



# Legal and Compliance

Oversees all Legal and Compliance related functions including:

- Compliance, Standards and Inspections
- Occupational Safety and Worker's Compensation
- Prison Rape Elimination Act Coordinator
- Information Security and Privacy
- Audit Manager
- Quality Improvement and Risk Management
- Americans with Disabilities Act Coordinator
- General Counsel's Office, which includes:
  - Agency Records Retention, American with Disabilities Act Coordinator, Inmate Grievance, Agency Mailroom and Policy Development

